



NEWSLETTER

WINTER 2011

Working Since 1972 to Save the Environment of Moorestown

"Never doubt that a small group of thoughtful, committed people can change the world. Indeed, it is the only thing that ever has."
— Margaret Mead

Jan. 2011, Volume 40, Issue 1

In This Issue

- Annual Joint Meeting
- A Note From the President's Desk
- Getting to Know Jennifer Bulava
- BCT Honors Kathy Carswell
- "If it Stings it Must Be a Bee—Right?"
- 111th Christmas Bird Count
- 2011 NAC Schedule & Conservation Projects
- Wigmore Acres Update
- 3rd Annual Esther Yanai Memorial Hike
- Kendles Run Banner Unveiled
- New Paths at Swede Run Fields
- SSO '10 Thank You & Photos
- STEM Membership Form
- Paper Recycling—Easy as 1-2-3
- Area Events of Interest

THE ANNUAL JOINT MEETING

Hosted by STEM, MIA, PCWA, and the Moorestown Garden Club
featuring:

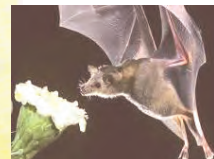
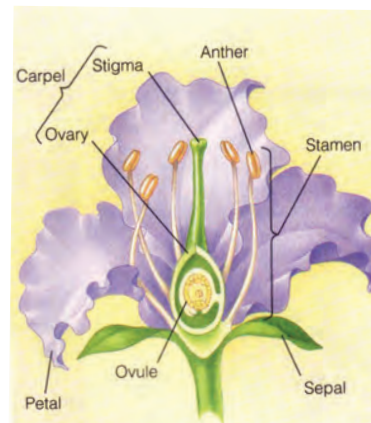
THE SECRET LIFE OF PLANTS AND POLLINATORS

presented by Jennifer Bulava of Burlington County Parks

Monday, January 24, 2011 at 7:30 p.m.
Moorestown Community House
16 East Main Street, Moorestown

FREE ADMISSION

Flowers are not just pretty colors and pleasant smells for us—it's all about the pollinators. Naturalist Jennifer Bulava's PowerPoint presentation will focus on the incredible ways in which plants communicate with animals. Discover the amazing strategies plants use, the colors that pollinators see, and ways in which both plants and animals can help or deceive each other.



Did you know that a bee's eye-view is extremely different from what we see and from what a bird sees? Participants will find that taking a closer look at flowers and their pollinators uncovers a hidden world that is more complex and fascinating than imagined.

The Annual Joint Meeting is sponsored by Save The Environment of Moorestown (STEM), Moorestown Garden Club, Moorestown Improvement Association (MIA), and Pompeston Creek Watershed Association (PCWA). Light refreshments will be served. Join us for this interesting

and informative presentation. For more details contact Kathy Carswell at (856)722-9495 or tothealps@verizon.net.

Photos from Google.com, Images

Calendar of Upcoming STEM Events

- Wed., January 19**
STEM Steering Committee Mtg.
7:30 p.m.
- Mon., January 24**
Annual Joint Meeting
Moorestown Community House, Main Street
7:30 p.m.
- Sun., February 6**
STEM Strategic Meeting
10:00 a.m.
- Wed., February 16**
STEM Steering Committee Mtg.
7:30 p.m.
- Sat., March 12**
NAC Conservation Project
Strawbridge Lake Buffer
Rt. 38/Pleasant Valley Ave.
8:30-10:30 a.m.
- Wed., March 16**
STEM Steering Committee Mtg.
7:30 p.m.
- Sat., April 9**
NAC Conservation Project
Pompeston Park Upstream
of New Albany Road
8:30-10:30 a.m.

A NOTE FROM THE PRESIDENT'S DESK

In October I had a wonderful opportunity to attend The National Land Conservation Conference in Hartford, Connecticut. The Land Trust Alliance annually coordinates the largest land conservation conference in the country. What an experience—the rally had something for everyone! Seminars and workshops with excellent facilitators offered new techniques for conserving more land with less money. New England land trusts shared how they, with alternative energy sources, are becoming coal free by 2020. I spoke with representatives from Mexico, Puerto Rico, and Tasmania, and our discussions reminded me that our efforts are truly global. Why not consider attending the conference next year? You won't be disappointed.

—Betsy Schnorr

Getting to Know Park Naturalist Jennifer Bulava

As Park Naturalist for the Burlington County Park System, Jennifer Bulava is responsible for all aspects of environmental education within the County Park System. She holds a Bachelor of Science Degree in Natural Resource Management & Applied Ecology from Rutgers University. In her capacity as park naturalist, she creates, plans, and conducts nature programs for all ages. In addition, Jen is also certified in the field of Geographic Information Systems (GIS) and is in charge of computer-

based mapping for the County Parks System. She has been with Burlington County's Resource Conservation Department for nine years and as the Park Naturalist for three years.

Jen will be presenting *The Secret Life of Plants and Pollinators* at the Annual Joint Meeting on January 24, 2011 at 7:30 p.m. at the Morestown Community House. The event is sponsored by STEM, PCWA, MIA, and the Moorestown Garden Club. Light refreshments will be served.



Jennifer Bulava can be contacted at the Burlington County Department of Resource Conservation, P.O. Box 6000, Mount Holly, NJ 08060.

Image on left, courtesy of Google Images, features a pollinator postage stamp.

BurlCo Times Recognizes Efforts of Kathy Carswell

Congratulations to STEM Vice President Kathy Carswell, who has been selected by the *Burlington County Times* as one of the people worthy for inclusion on their yearly "Making a Difference" list. The BCT staff looks for "someone who is working hard to change a little piece of his or her world." It is no surprise that Kathy should have been chosen. Her unflagging dedication, inspiration, enthusiasm, and leadership in the STEM organization have guided the group for many years. Best wishes to Kathy and her husband Sam as they relocate to California later in 2011. Moorestown's loss is the West Coast's gain. —Betsy Schnorr



A vacationing Kathy Carswell with a primate friend

"If it stings it must be a bee—right?"

In the three years I have been keeping honey bees, I am often reminded that people cannot distinguish between honey bees and wasps or yellow jackets. I am told stories of "bees" intruding on picnics, buzzing around garbage and soda cans, and emerging from nests in the ground to sting passers-by. This is a case of mistaken identity. Although bees, wasps, and yellow jackets are related, bees seem to make up a large part of the bad reputation and take most of the blame for their aggressive relatives' behavior.

The European honey bee was brought to this country by the Pilgrims to produce honey. Before the easy availability of cane sugar, honey was the primary sweetener in early America. Honey bees are round, plump pollinators and are really more brown and gold than yellow and black. They have an electrostatic charge which helps pollen grains adhere to their bodies. They are primarily interested in gathering pollen and nectar from flowering plants to bring back to the hive—a female

dominated, well organized society. From the moment a worker bee emerges from her honeycomb cell, until her last wingbeat, a bee's life is work, work, work. Bees are mild mannered and usually meet up with people when stepped upon in lawn clover or when their path back into the hive is blocked by a human form. The role of bees as pollinators is a vital link in the food cycle.

Wasps and yellow jackets are thin-waisted with long, narrow bodies and are black and yellow. They are carnivores and protein eaters and can live in paper or mud nests. Wasps can be aggressive when they sense a threat, but yellow jackets are aggressive by nature and will protect territory. These are the guests at picnics and trash cans. They should be regarded with caution as they can sting multiple times and do not lose their stinger in the process. So the next time you hear a buzz, look before you swat or spray. Because a buzz doesn't mean a sting, and a sting doesn't mean a bee.

—M. Jean Mancini



Comparing the Honey Bee to Several of its Relatives:

All photos courtesy of Google Images

Top right: a Wasp

Top left: a Bumble Bee

Second from top: a Hornet

Third from top: a Honey Bee

Bottom photo: A pollen-encrusted honey bee

111th Christmas Bird Count

Prior to this year, I had participated in ten Moorestown Christmas Bird Counts and never had to deal with a real snow storm. Well, that streak is over. This year's count occurred the day after Christmas. The early forecasts called for snow—potentially one of those classics where warm, moisture-laden air from the south meets up with a cold, dry air mass from Canada. Initially, the forecasters backed off of their original forecasts and said the storm was going to move farther offshore and hence spare us. A couple of days later and the forecast for the storm was back on, and guess what—they got it right!

The morning started out cold and windy, but snow free. We started the day at Strawbridge Lake where a couple of dozen Mallards and Canada Geese were sharing a small section of open water in an otherwise frozen lake. Strawbridge Lake flows into the Pennsauken Creek (which eventually makes its way to the Delaware River in Palmyra), so from there we headed to the Liberty Bell Bank parking lot across the street from Rita's Water Ice in Lenola. On the north side of Camden Avenue the creek was pretty slow, but on the south side, right behind Rita's, it turned out to be one of the day's hot spots. Swimming among scores of Mallards and Canada Geese were a couple of great birds—a Green-winged Teal and a Hooded Merganser. Both were drakes, and in typical bird fashion were dressed to kill. Convinced that there were no other goodies hanging out with the raft of mallards, we were preparing to cross Camden Avenue to get back to our cars, when we were greeted by a very close fly-over by an adult Bald Eagle. Heck, it wasn't even 8 a.m. and we already had a Bald Eagle—not a bad start.

“Swimming among scores of Mallards and Canada Geese were a couple of great birds—a Green-winged Teal and a Hooded Merganser. Both were drakes, and in typical bird fashion were dressed to kill.”

Our next stop was down off of Lenola Road by Lew's Farm Market, also along the Pennsauken Creek. It was pretty slow, and by now you could really feel the winds beginning to pick up. Pompeston Woods was our next stop. It was very quiet with the exception of a pair of Yellow-bellied Sapsuckers and the usual suspects—Carolina Wrens,

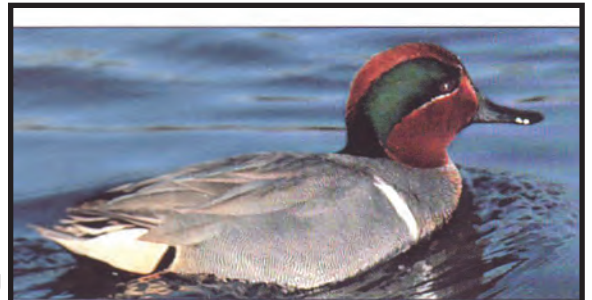
titmice, chickadees, Downy Woodpeckers, et al. From there we headed over to Swede Run Fields (formerly the Benner Fields), hoping to catch sight of the Peregrine Falcon that my wife and I had spotted a little over a week earlier. While we didn't get the Peregrine, we did get some great views of a Merlin. Merlins are also falcons, and they have a reputation as being absolutely fearless. We were on the eastern side of Westfield Road down by the creek, when my friend Bob called out that he had a falcon moving right to left. The bird quickly moved out of sight, so we hurried across the road to see if we could find him. We finally found him on the ground, where it was evident from the flying feathers that he had caught whatever it was that he had been chasing. Our final stop of the day was at Boundary Creek Natural Resource

Area. By then it was snowing at a very good clip, and the snow was practically horizontal. As we were walking on the trail straight down to the creek, we scared up a group of small birds. They were White-crowned Sparrows—a pretty uncommon bird in our area. After scoping out the creek, where we saw nothing but Canada Geese and Mallards, we were heading back to the car when my friend spotted an American Woodcock—another nice bird and one that is not always seen on count day.

One of the fun things about the Christmas Bird Count is the variety of birds you have over the years. Going back to 2005 we've tallied a total of 65 species of birds on my section of the Moorestown count circle. The Moorestown count circle is a 7.5-mile radius centered at the intersection of Route 38 and Church Street. The Moorestown circle is made up of ten regions, which is exclusively within the borders of Moorestown. The highest species count we've had on a single count day since 2005 is 45. That means there are a large number of birds that are not seen on every count. Looking back on my count data, again going back to 2005, there were 18 species of birds that were seen only on a single count. (Cont'd on page 6)



Yellow-bellied Sapsucker, photo from NJ Audubon RNC files



Mallard, male



Mallard, female



Hooded Merganser, male above and Hooded Merganser, female below



Center and bottom photos, courtesy of Stokes Field Guide to Birds, Eastern Region, Donald and Lillian Stokes

NATURAL AREA CARE

— Caring for the Environment



For additional information regarding specific conservation projects, please contact the site leader listed in the 2011 NAC calendar on pages 4 & 5.

UPCOMING CONSERVATION PROJECTS

Volunteers are needed for all events—families always welcome!

Strawbridge Lake Buffer, Route 38—Saturday, March 12, 8:30-10:30 am

Pompeston Park Upstream, New Albany Road—Saturday, April 9, 8:30-10:30 am

WIGMORE ACRES BUTTERFLY GARDEN UPDATE

During the Natural Area Care session scheduled for Saturday, May 14, 2011 the Wigmore Acres Butterfly Garden will be the site of a major planting effort. Work on the garden began last summer as part of Nick Poaletti's Eagle Scout project. Nick has been busy coordinating each part of the process as the former field is converted to a colorful garden with the potential to attract an assortment of butterflies and other wildlife.

By last fall, Nick and his enthusiastic volunteers had tilled and amended the soil and were ready to install fencing along the garden perimeter to prevent deer browsing. On December 11, Nick had another group of great volunteers to install the fence posts and the two benches that he had made for the garden. Needless to say, we are greatly indebted to Nick for all his hard work and perseverance.

STEM would like to thank everyone associated with this project for their time and donations including Dan Loch & Flying Feather Farm, Leonberg Nursery, Home Depot, the Poaletti Family, Josh Kravitz, Dominic Insalaco, Jack Spirgel, Seth Broadbent, Charlie Spirgel, Johnny Neu, Harry Lewis, Dave Schill, Arnie Kravitz, Chuck Insalaco, and Chuck Marticello.

Wigmore Acres is located in a prime spot on the east end of town at the corner of Bridgeboro and Westfield Roads and is home to a portion of Swede Run.

*Photo top left: Dave Schill and Jacob Shipley.
Bottom left: Dan Loch and Nick Poaletti.
Bottom right: members of Troop 601 spread donated topsoil in preparation for planting.*



2011 NAC Calendar

Volunteers are always welcome and appreciated

Second Saturday and Weekday Events

Sat., March 12, 8:30-10:30 am

**Strawbridge Lake Buffer
Route 38**

Site Co-Leader: Nancy Ciampa
njciam@verizon.net

Site Co-Leader: Kay Smith
Kksmith4@verizon.net

Sat., April 9, 8:30-10:30 am

**Pompeston Park Upstream
of New Albany Road**

Site Co-Leader: David Bicking
dbickin@yahoo.com

Site Co-Leader: Kay Smith
Kksmith4@verizon.net

Wed., April 27, 9-11 am

Waterworks Woods

Kings Highway@Waterworks

Site Co-Leader: Walt Trommelen
littera@comcast.net

Site Co-Leader: Louisa Khanlian
LKhanlian@msn.com

Sat., May 14, 8:30-10:30 am

**Wigmore Acres
Westfield Road**

Site Co-Leader: Jean Fox
Wjf3@verizon.net

Site Co-Leader: Kathy Huffman
Kajer3@comcast.net

Tues., May 17, 9-11 am

Little Woods

Creek Road@Laurel Creek Blvd.

Site Leader: Renee Boulis
rboulis@yahoo.com

Sat., June 11, 8:30-10:30 am

Esther Yanai Preserve

Garwood Road@Swede Run

Site Leader: Dick Nelson
kcidnelson@comcast.net

Sat., July 9, 8:30-10:30 am

**Pompeston Park Downstream
of New Albany Road**

Site Leader: Debbie Lord
dglord@aol.com

Sat., Aug. 13, 8:30-10:30 am

**Little Woods & Susan
Stevens Halbe Preserve**

Creek Road@Laurel Creek Blvd.
Site Co-Leader: Susan Buffalino
sbuff4@aol.com

Site Co-Leader: Lonnie Tait
lonniet@yahoo.com

**Second Saturday and
Weekday Events (cont'd)**

Sat., Sept. 10, 8:30-10:30 am
Waterworks Woods
Kings Highway@Waterworks
Site Co-Leader: Walt Trommelen
littera@comcast.net
Site Co-Leader: Louisa Khanlian
Lkhanlian@msn.com

Tues., Sept. 20, 9:00-11:00 am
South Valley Woods
next to South Valley School
Site Co-Leader: Elaine Young
Youngsters1@verizon.net
Site Co-Leader: Nancy Fife
kdfife@comcast.net

Sat., Oct. 8, 8:30-10:30 am
**Pompeston Park Downstream
of Fernwood Avenue**
Site Leader: Tom Hottenstein
thottenstein@comcast.net

Sat., Nov. 12, 8:30-10:30 am
**Pompeston Park Upstream
of New Albany Road**
Site Leader: Kay Smith
Kksmith4@verizon.net

****Visit us online at www.stemonline.org.**
Stay up-to-date with STEM activities with our e-mail alerts. Receive reminders about outdoor events, Natural Area Care, and family-friendly activities. E-mail Sue Lindeboom at slindeboom@comcast.net Susan Buffalino at sbuff4@aol.com, or please call Kay Smith at 235-2986.

***The Sun Shines Down on STEM Members During
the Third Annual Esther Yanai Memorial Hike***



Photo at left, left to right, Back: Dave Bicking, Sam Carswell. Second row: Margo Foster, Betsy Schnorr, Walt Trommelen, Walter Fox, Kathy Carswell, Joan Ponessa, Diane Fuhrer. First Row: Matt Boulis, Renee Boulis, Jean Fox, Kevin Fox, Joe Ponessa, Kay Smith. Front (kneeling): Claire Adair, Kathy Huffman.

The Third Annual Esther Yanai Memorial Walk was held on a sunny Sunday, December 5, 2010 at Swede Run Fields on Westfield Road. Sixteen participants gathered near the old stone building to walk the two and a half-mile perimeter path. Soaring Red-tailed Hawks, a foraging Great Blue Heron, a murmuration of starlings entertained the group, and many of the walkers picked up litter along the way. Jean Fox graciously performed the traditional reading of "Ways to Build Community" in Esther's honor.
—Kathy Carswell

Esther Yanai was a founding member of Save the Environment of Moorestown. She was an early activist in the 1970's who helped to focus the spotlight on important environmental issues of the day.



Photo above, trash pick-up by Margo Foster and Betsy Schnorr during the Esther Yanai walk.

Kendles Run Acres Banner Unveiled at SSO

As is STEM's tradition, when an open space is preserved, a commemorative banner is designed and constructed by a local artist. At this year's SSO Open Space Festival on October 10, 2010, the latest banner, created by Mira Mayer, recognizing Kendles Run Acres on Borton Landing Road was unveiled. The photo below recorded the event.

Photo below, from left, Former mayors, Dan Roccatto & Kevin Aberrant, a representative for the donating family, Mira Mayer, & STEM President Betsy Schnorr.



New Paths Installed at Swede Run Fields

Everyone's welcome to walk or run on the recently installed paths that follow the perimeter of Swede Run Fields. Bird sightings from past Moorestown Christmas Bird Counts, confirm that Swede Run Fields is the best place in Moorestown to see unusual birds (at least during the Christmas Bird Count). So get outside and enjoy the new trail!

Swede Run Fields is a preserved open space that is owned by Moorestown Township and is leased for farming. As a Township property, it should be noted that Moorestown's regulations regarding leashing of all dogs and proper disposal of pet waste are in effect at the site. Bagged waste may be put in the trash or flushed down the toilet. Additional disposal methods are discussed online; Google "Simple Ecology" or "Pet Waste: Dealing with a Growing Problem in Developing Areas, NJ DEP."
—Margo Foster

2010 STEM Steps Out Open Space Festival— "Butterflies Are Free"

Thanks to all who contributed to the success of this year's festival. The event could not have taken place without the energy, enthusiasm, and expertise of all involved. Photo below by Bill Creekmore, Hannah Kelley assists with a Monarch release. Photo on right, front row: STEM Fishing Contest winners display their prizes; back row, STEM Fishing Contest volunteers.



SSO at Strawbridge Lake—another combo of fine weather and exciting events added up to a great day for the 2010 SSO Open Space Festival on October 10. Master Gardener Frank Victor tagged a butterfly so that its migration to Mexico could be monitored. Hannah agreed to assist him with the release of the butterfly. The butterfly must have really liked Hannah or was not camera shy because it paused almost a minute after he placed it on her nose before flying away.
—Kathy Carswell

("111th Christmas Bird Count," continued from page 2)

Breaking the data down further, one could surmise that the best place to see unusual birds in Moorestown (at least during the Christmas Bird Count) would have to be Swede Run Fields. Five of the 18 species that we've seen only once since 2005 were seen there—Northern Harrier, Fox Sparrow, Tundra Swan, Peregrine Falcon and the Merlin. Coming in second would be Boundary Creek Natural Resource Area where the American Widgeon, American Woodcock, and White-crowned Sparrow were seen. This is especially impressive when you take into account that the park has been open for only a few years. Coming in third would be that little hot spot behind Rita's Water Ice, where we spotted the Green-winged Teal and the Hooded Merganser, not to mention the Bald Eagle fly-over.

This year's count was cut short by the weather. There simply aren't many birds sitting around when you are dealing with the combination of heavy snow and thirty-plus mile-per-hour winds. Even with the tough conditions, we had what arguably could have been our best count day ever. Six new species on count day was pretty amazing. The sight of that Merlin zipping across the open fields at Swedes Run Fields is one that I won't soon forget.
—Mark Pensiero

Bird Species Seen Only on a Single Count

Year	# of Species	Species
2005	2	Common Merganser, Hermit Thrush
2006	5	Northern Pintail, Northern Harrier, American Kestrel, Fox Sparrow, Swamp Sparrow
2007	4	Tundra Swan, Great Egret, Peregrine Falcon, Winter Wren
2008	1	American Widgeon
2009	0	
2010	6	Green-winged Teal, Hooded Merganser, Merlin, American Woodcock, Eastern Bluebird, White-crowned sparrow



American Woodcock, photo courtesy of *National Audubon Society Field Guide to North American Birds*, by John Bull and John Farrand, Jr.



White-crowned Sparrow, photo courtesy of *Birding*, by J. Forshaw, S. Howell, T. Lindsey, & R. Stallcup. www.stemonline.org 6



Annual STEM Membership Form

Return to:

P.O. Box 704, Moorestown, NJ 08057

Is your membership up-to-date?

(An expiration date appears on the mailing label.)

(Please print)

Name _____ Check HERE for electronic Newsletter

Address _____

Phone _____ E-mail _____

Memberships: New Renewal

Individual (\$15) \$ _____

Family (\$25) \$ _____

Student (\$10) \$ _____

Donations:

Open Space Fund \$ _____

Ongoing activities \$ _____

Amount enclosed: \$ _____

Dues and donations are tax-deductible

VOLUNTEER OPPORTUNITIES (please circle your areas of interest)

Communications

Flyers, brochures, & postcards
Newsletter
Public relations

Advocacy

Attend town meetings
Letter writing
Phone calls

Education

Community education
Educational materials
School-based programs

Events

Children's activities
Donating plants for Plant Sale
Plant Sale staffing
Open Space Festival
Refreshments

Outdoor Activities

Conservation projects
Lead nature walks
Litter Patrol
Natural Area Care
Open space monitoring

Administrative

Clerical
Computer related
Fundraising
Legal issues

Visual and Creative Arts

Arts and crafts
Fine Arts
Graphic design
Photography

Other

STEM is a 501c3 non-profit organization. Contributions are tax-deductible to the extent permitted by law. Information filed with the Attorney General concerning this charitable solicitation may be obtained from the Attorney General of New Jersey by calling (201) 504-6215. Registration with the Attorney General does not imply endorsement.

STEM Logo Apparel 4 Sale Extra Time on Your Hands? Paper Recycling – Easy as 1-2-3

Now available!

STEM tee shirts for your favorite people. Forest green with STEM logo; 100% pre-shrunk heavy cotton. Sizes from Youth Medium to Adult 3xLarge. Each \$10. Also available, STEM caps, Stokes Hill long-sleeved tee shirts, and STEM tote bags. Call Margo for details: 856-235-5862



STEM could use your help! The nominating committee is actively seeking members to fill positions on STEM's Steering Committee. In the spring, at our Annual Meeting, we will vote for new Steering Committee members. Other areas to volunteer that may suit your interests include clerical/archivist (filing news clippings, etc.), publicity (press releases), computer & website, and liaison with the Moorestown High School Environmental Club. Interested? Contact Nanci Clem at (856) 866-0065.



Students from Roberts Elementary and Baker School participated in a Butterfly Coloring Contest for the 2010 STEM Steps Out Open Space Festival— "Butterflies Are Free." The photo at left shows some winning artists with their entries.

Recently, a friend spoke with the driver of the paper recycling truck in his neighborhood. The driver said that the system is designed to be semi-automated, so that the driver can stay in the truck. However, he said that he has to get out of the truck hundreds of times on his pick-up route, adding a lot of time (and cost) because of three problems that could easily be solved if householders would follow these guidelines:

- 1). Position the bin so that the metal bar on the bin faces the street. This way the lid will open properly when the arm picks up the bin for dumping.
- 2). Place all paper and cardboard inside of the bin, leaving the top and sides of the bin clear. There is no provision for manual pick-up of these items. Any paper and cardboard that will not fit in the bin needs to be saved for the next pick-up date.

3). Position the paper recycling bin at least a foot away from other recycling containers. There needs to be space for the arm to pick up the bin. If there is no space, the driver has to get out of the truck and move the other recycling barrels. It is pretty simple to do these things right. Everyone needs to do their part to make this system work efficiently. Thanks for your help.

—Margo Foster

THANK YOU to the many STEM volunteers who contributed to this newsletter, and assisted in its publication by proofreading, mailing the newsletter, and offering numerous suggestions that improved its quality.



P. O. Box 704
Moorestown, NJ 08057
www.stemonline.org

PLACE
STAMP
HERE

RETURN SERVICE REQUESTED

Monday, January 24, 2011 at 7:30 p.m.
THE SECRET LIFE OF PLANTS AND POLLINATORS
2011 ANNUAL JOINT MEETING
Moorestown Community House
Admission: FREE

AREA EVENTS OF INTEREST

- Saturday, January 22, 2011**- Winter Birding at Assunpink, 9am, NJA Rancocas Nature Center, call 609-261-2495 for details
- Saturday, February 5, 2011**- Comberland County Winter Eagle Festival, 8am-4pm, Mauricetown Firehall, Noble St., Mauricetown, check website for details
- Saturday, February 19, 2011**- Barnegat Light with Lloyd Shaw, 9am, NJA Rancocas Nature Center, 794 Rancocas Rd., Westampton, call 609-261-2495 for details
- Sunday, February 20, 2011**- Maple Sugaring, 1:30-3:30 pm, NJAS Rancocas Nature Center, 794 Rancocas Rd., Westampton, call 609-261-2495 for details
- Saturday, March 5, 2011**- “Top to Bottom” Hike Franklin Parker Preserve, 9am-3pm, Chatsworth, 908-234-1225 or carol@njconservation.org for details
- Saturday, March 12, 2011**- Salem Co. Winter Waterfowl-Gutsmuth Audubon Wildlife Society, www.audubonwildlifesociety.org
- Saturday, March 19, 2011**- 15th Annual NJ Land Conserv. Rally, 8am-5pm, Brookdale CC, Lincroft, NJ
- Sunday, March 20, 2011**- Salamander Sunday, 1:30-3:30 pm, NJAS Rancocas Nature Center, 794 Rancocas Rd., Westampton, call 609-261-2495 for details
- Saturday, March 26, 2011**- 22nd Annual Pinelands Short Course, 9 am-3 pm, Burlington County College, 601 Pemberton Brown Mills Rd., Pemberton, call 609-893-1765 for details

STEM Steering Committee Members for 2010-2011

Betsy Schnorr, President; 856-235-6348 & BetsyBJS@aol.com
 Kathy Carswell, Vice-president; 856-722-9495 & tothealps@verizon.net
 Chet Dawson, Treasurer; 856-273-0126 & cwd9@cornell.edu
 Susan Buffalino, Sec. & Newsletter Ed.; 856-866-9506 & sbuff4@aol.com
 Claire Rollin Adair, Director; 856-727-3830 & cerollin@gmail.com
 Nanci Clem, Director; 856-866-0065 & nclem91397@comcast.net
 Jean Fox, Director; 856-642-7864 & wjf3@comcast.com
 Kathy Huffman, Director; 856-778-2201 & kajer3@comcast.net
 Mark Pensiero, Director; 856-235-0171 & mark.w.pensiero@lmco.com
 Walt Trommelen, Director; 856-234-4721 & littera@comcast.net

STEM's Steering Committee meets the third Wednesday of each month (with a break in December), and it's there that decisions are made about STEM's activities for the year, STEM involvement at public events, directions on environmental advocacy, financial commitments, legal obligations—in short, most aspects of the organization.

Steering Committee members are nominated in late winter and early spring, and their acceptance is voted on at our Annual Meeting in the spring. STEM members are welcome to attend a Steering meeting (though, per our by-laws, not permitted to vote on motions), and any STEM member who is interested in serving on the Steering Committee is encouraged to speak with someone on our Nominating Committee. New views keep the organization dynamic! For information about STEM and its programs, contact Nanci Clem at 856-866-0065.

Join us on the third Wednesday of the month—you'll be surprised how much you'll learn not just about STEM, but about Moorestown in general. See the calendar on the front page or contact one of our Nominating Committee members: Nanci Clem at 856-866-0065 & nclem91397@comcast.net; Kathy Huffman at 856-778-2201 & kajer3@comcast.net; and Margo Foster at 856-235-5862 & mcmfoster@yahoo.com.